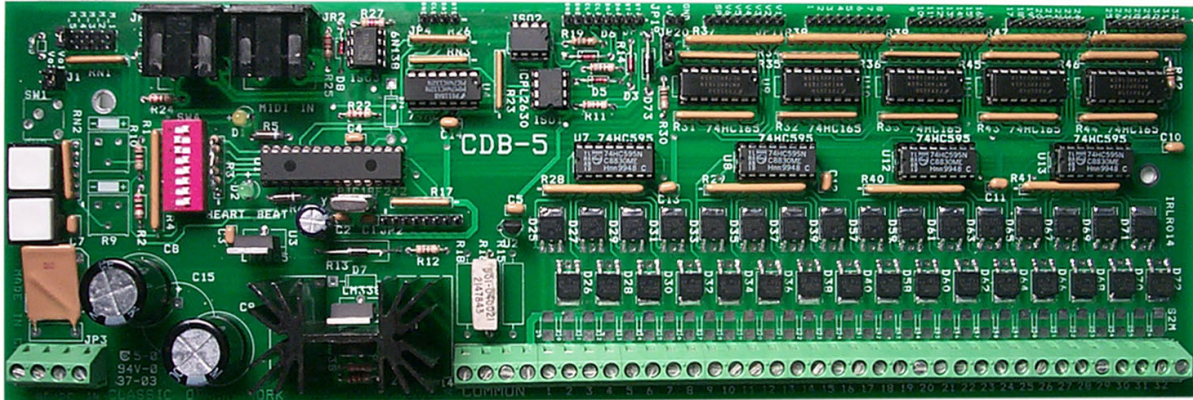


Classic Organ Works

2800 JOHN STREET, UNIT 4, MARKHAM, ONTARIO CANADA L3R 0E2
WWW.ORGANWORKS.COM 905-475-1275 OR 1-888-812-9717 INFO@ORGANWORKS.COM

CDB-5: Chimes Driver Board



Description

The Classic Organ Works Chimes Driver Board (CDB-5) can drive any kind of chimes – AC or DC, high-power or low-power. As such, it replaces all previous versions of Classic Chimes Driver Boards while providing more features.

The CDB-5 requires a single power source that may be from an AC transformer (typically 30V rms) or positive DC.

It can be driven by Classic serial or RS-422 signals or simultaneously, in stand-alone applications, by parallel inputs or MIDI. The serial inputs are optically isolated.

The CDB-5 can be set to receive MIDI input on any MIDI channel from 1 to 16. A MIDI THRU function is also provided.

There are 32 parallel inputs and a link selects whether they are active-high (+12V) or active low (0V). Various modes of operation and set-up are controlled by a DIP-Switch.

Up to six fully-adjustable volume-levels can be provided for parallel inputs or the volume can be variable through a console potentiometer or expression shoe. Via MIDI, it is possible to have velocity-sensitive chimes.

The set of chimes may be engaged or disengaged with an external "Stop Control" (e.g. switch). Outputs can be regulated to "even-out" old chimes. All outputs are overload-protected so no damage results if chords are played and held.

Features

- o General-purpose chime-driver board for AC or DC Chimes
- o Controls a 32-note set of chimes
- o Compatible with most chime units
- o Stand-alone unit if required
- o One-board replacement for all previous CDB versions
- o Single-voltage power input (can be AC transformer or positive DC to 30V or more)
- o Inputs can be:
 - Serial RS-422
 - MIDI input, selectable on any MIDI-channel 1-16
 - 32 parallel inputs, either active-high (+12V) or active-low (0V) operation
- o MIDI THRU function allows other MIDI boards to be chained
- o Responds to velocity MIDI data (for touch-sensitive chimes)
- o Six adjustable volume stages controllable via MIDI and serial or manually via parallel inputs.
- o Linear control of volume level in serial modes
- o Independent volume setting for each output (to "even-out" old chimes)
- o 32 overload-protected outputs
- o "Stop Control" allows outputs only if Chimes stop is on
- o Diagnostic LEDs on board
- o Approximate size: 11" x 5" (w x h)

Applications

Universal chimes driver board, AC or DC, high-power or low-power, variable volume. Stand-alone or with a Classic organ-control system. Can be driven with serial, parallel or MIDI input.