

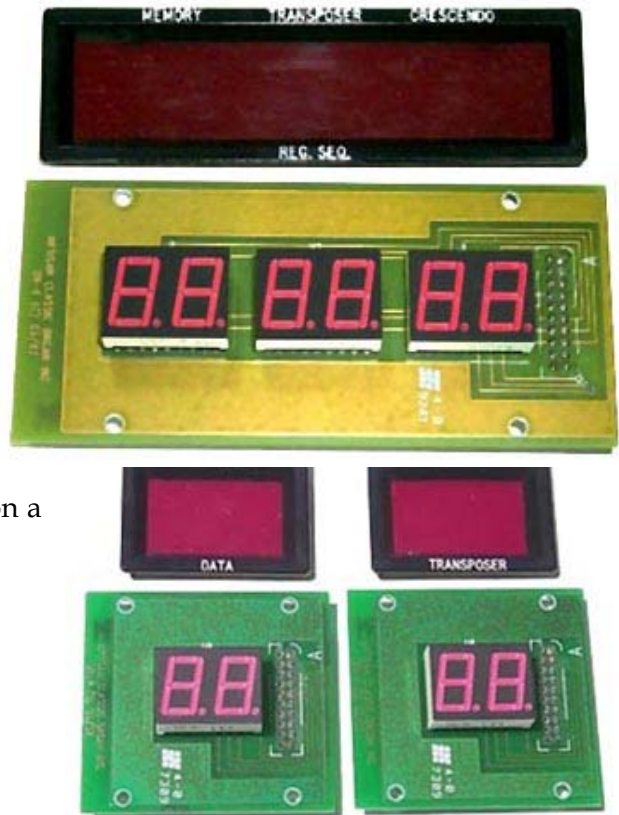
Classic Organ Works

2800 JOHN STREET, UNIT 4, MARKHAM, ONTARIO CANADA L3R 0E2
WWW.ORGANWORKS.COM 905-475-1275 OR 1-888-812-9717 INFO@ORGANWORKS.COM

LED DISPLAYS

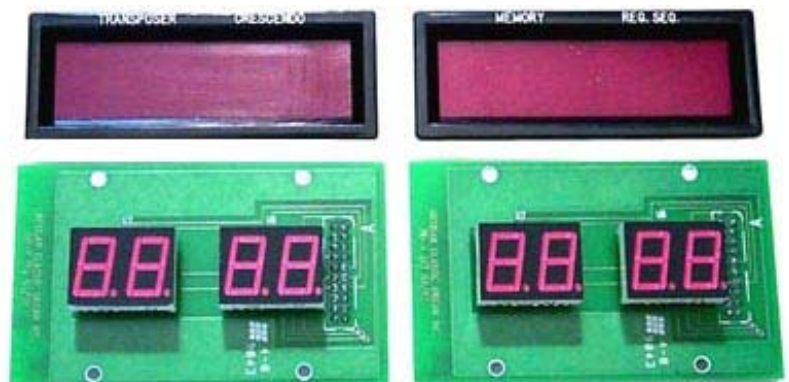
DB-2, -4, -6 NUMERICAL DISPLAYS

- These seven-segment numerical-display boards may be placed anywhere convenient on the console.
- Available in three sizes - DB-2 has one pair of digits, DB-4 has 2 pairs, DB-6 has 3 pairs.
- Red, 0.625" high, seven-segment numerical characters.
- Black, engraved, plastic bezels and red filters available.
- Green or yellow displays are possible.
- Up to four display pairs may be chained on a common 20-pin ribbon cable.
- Parallel driven by Console Computer board.
- DB-6 is electrically identical with the display on a CTRL-1 panel.
- Aperture sizes to mount black plastic bezels:
 - DB-2: 1.375" wide x 1.175" high
 - DB-4: 3.375" wide x 1.175" high
 - DB-6: 4.375" wide x 1.175" high



BEZELS for DISPLAYS

- All Classic displays can have black-anodised aluminum bezels.
- Larger panels are secure by pins. Smaller ones are glued to the surround.
- Red displays have red filters.
- All green, yellow or multi-colour displays have neutral-density filters to hide the background.
- DB displays can have engraved black plastic bezels with red filters.



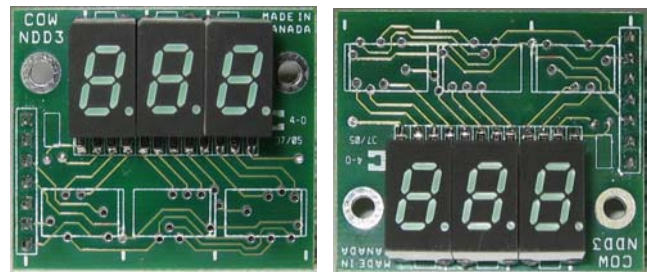
ND-2 DISPLAY

- ND-2 has two groups of three small digits.
- Replacement for ND-1 (with two groups of two digits as used in the Music Rack Control Panel).
- Seven-segment numerical characters, 0.3" high, green.
- Red or yellow displays are possible.
- Black-anodised bezels and neutral-density filters available.
- Several displays may be chained on a common ribbon cable.
- Serially-driven (decoders on boards).
- Two apertures 0.9" wide x 0.75" high.



NDD-3 DISPLAY

- Similar to ND-2.
- One group of three small digits.
- Aperture 0.9" wide x 0.75" high.
- Two versions – if space restricted behind.



BGRF-20/1, /2, /3, /4 BARGRAPH DISPLAYS



- For Expression and Crescendo shoe position indication.
- 20 adjacent sections of green LEDs.
- Alternative is 13 green, 4 yellow and 3 red. (Red can be used to indicate Sforzando on/off)
- Available as end-to-end single, double (as shown), triple and quadruple units.
- Single unit can be mounted vertically or horizontally.
- Each BGRF-20 is supplied with an LEDDR-1 driver board for serial inputs.
- Bezel is black-anodised aluminum (brass to special order only).

(Division of Artisan Classic Organ Inc.)

2800 John Street, #4
Markham, Ontario
Canada L3R 0E2
Tel. 905-475-1275 or 1-888-812-9717
Fax. 905-475-2735
Web <http://www.organworks.com>

© 2007 Artisan Classic Organ Inc.
CONTROLPNLSDISPLAYS2007.DOC 2007-09-26