

# Classic Organ Works

A division of Artisan Classic Organ Inc.

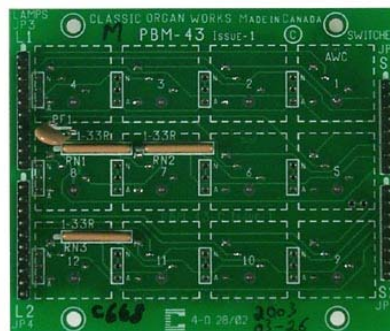
2800 John Street, Unit 4, Markham, Ontario, Canada, L3R 0E2

Tel.: 905 475-1275 or 1-888-812-9717 Fax: 905-475-2735 E-mail: info@organworks.com Web: organworks.com

## CONTROL PANELS without DISPLAYS

### PBM-43 PUSHBUTTON SWITCH ARRAYS

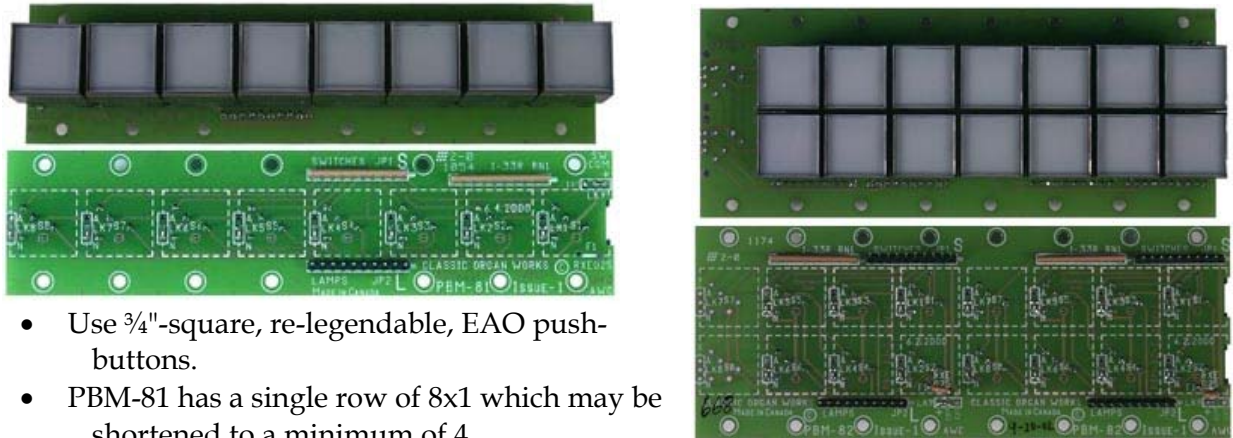
- Uses 3/4"-square, re-legendable, EAO push-buttons, available in a 4x3 array which may be mounted either way round.
- All switches and lamps have independent connections.
- Panel is compatible with matrixed piston and lamp wiring in groups directly to the CCC.
- Legends are laser-printed on clear film (in any font) and are inserted in the switch cap.
- Lamps are 12-14V bi-pin type and are replaceable by removing the switch cap.
- These push-button arrays may be used for all stops and couplers, or just for additional stops such as MIDI-stops or when divisions are added to consoles with limited space to add more drawknobs.
- The ALT function can be in any switch position.
- These panels are electrically similar to the CTRL-1 (without the display), the PBM-81/82 series and the LPB-44/82 series.
- Panel size is 4.6" wide by 4" high with a black-anodised finish (same size as CTRL-1/2 panels).
- Aperture is 3.05" wide by 2.3" high.



## **LPB-44, 82 PUSHBUTTON SWITCH ARRAYS**

- Large, ¾"-square, re-legendable, EAO push-buttons, available in 4x4 or 2x8 (two rows of 8).
- Either type uses a common "piggy-back" driver board with matrixed switches and serially-driven lamps.
- They are compatible with matrixed piston wiring directly to the CCC, and include serially connected lamp drivers to minimize wiring.
- Legends are laser-printed on clear film (in any font) and are inserted in the switch cap.
- Lamps are 12-14V bi-pin type and are replaceable by removing the switch cap.
- These pushbutton arrays may be used for all stops and couplers, or just for additional stops such as MIDI-stops or when divisions are added to consoles with limited space to add more drawknobs.
- Panels without bezels may be stacked side-to-side to make larger arrays.
- They may be mounted either way round.
- Either type can be shortened to a minimum of 3 switches side-to-side.
- Black-anodised panels are available for standard arrays of 3x4 and 4x4 for use as 'MIDI-stop' panels.
- Aperture for LPB-44 is 3.05" wide by 3.05" high.
- Aperture for LPB-82 is 6.05" wide by 1.55" high.

## PBM-81, 82 PUSHBUTTON SWITCH ARRAYS



- Use 3/4"-square, re-legendable, EAO push-buttons.
- PBM-81 has a single row of 8x1 which may be shortened to a minimum of 4.
- PBM-82 has 2 double rows of 4x2 which may be shortened to a minimum of 3x2.
- These arrays are compatible with matrixed piston and lamp wiring directly to the CCC.
- Panels are similar to the CTRL-1 but without the display.
- The ALT function can be in any switch position.
- Arrays may be stacked end-to-end to make longer rows.
- Black-anodised panels are available.

## CUSTOM CONTROL PANELS

- We can provide other types of control panel to special order. For example:
- Brass panels have been made with individually-mounted Switchcraft push-buttons in various quantities, with or without a display. These are 5" wide x 4.5" high but otherwise similar to a CTRL-1.
- A tall, thin, brass panel (10" wide x 2.75" wide) has been made to mount three DB-2 displays one above another, as well as 8 Switchcraft push-buttons, where space was limited on the jambs of a drawknob console.
- Our standard control panel finish is black-anodised aluminum. Polished brass may be available to special order.

(Division of Artisan Classic Organ Inc.)  
2800 John Street, #4  
Markham, Ontario  
Canada L3R 0E2  
Tel. 905-475-1275 or 1-888-812-9717  
Fax. 905-475-2735  
Web <http://www.organworks.com>

© 2007 Artisan Classic Organ Inc.  
CONTROLPNLSNODISPLAY2007.DOC 2007-09-26